



# Update from the Consortium of Lancashire & Cumbria LMCs

Wednesday 4<sup>th</sup> December

## General Practice Alert State (GPAS)

You can see the latest SitRep results below. Results can also be found [on our website](#).

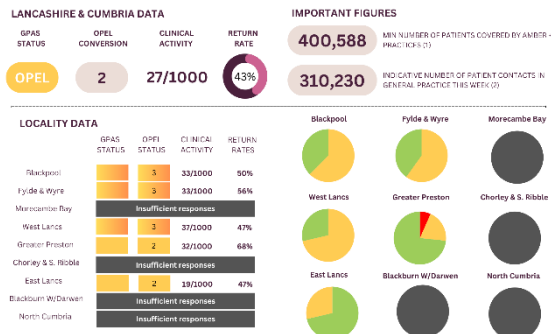
The data we do not receive prevents us from providing a robust picture to system partners and hinders our efforts to push for more support on your behalf.

We really appreciate you taking to the time to **help us to help you**.

[Please let us know](#) if you are a Practice Manager and do not receive the GPAS input emails.

Please let us know if you have any questions/ issues

### LMC GENERAL PRACTICE ALERT STATE SITREP | 29.11.2024



### A SELECTION OF THIS WEEK'S PRACTICE COMMENTS

Practitioner shortages, limited appointment availability due to GP sickness

### GPAS CHANGE SINCE LAST SITREP



### A QUICK GUIDE TO THE GPAS STATES



### LMC NOTE:

Please continue to share your data with us so that we can ensure the system is aware of any capacity and demand concerns pertaining to General Practices.

(1) This figure includes all practices that have a GPAS status of Amber, Red or Black. (2) This figure includes all practices that have a GPAS status of Amber, Red or Black.

## **GP Quality Framework: Peer-to-Peer Learning Events**

Thank you to all those who have attended the recent Quality Contract Events in Preston, Blackburn and for Morecambe Bay. The events have seen an impressive turnout, with representation from many practices across the area. Following an insightful presentation by Dr Adam Janjua, LMC CEO, interactive workshops and productive discussions have focused on maximising GPQC achievement. Attendees have had the opportunity to network, share best practice, and voice common challenges. As we know, the potential to receive the full quota of monies available from the ICB is currently extremely important. We remain positive in our hope that this event has provided this opportunity. Following these sessions, practices will receive a summary of the round table discussions, hints and tips from the LMC.

Thank you for taking time out of your busy weeks to attend. We look forward to continuing to build on the momentum from these learning events.

Please find below details for the last GP Quality Framework: Peer-to-Peer Learning Event:

### **East Lancashire**

Tuesday 10th December 2024

9am - 11am - Landmark, Burnley

**The event itself will be split into two sessions one focusing on the issues of work transfer and the second half looking to maximise GP Quality Framework Achievement.**

Please email [Rebecca.Noblett@nwlmcs.org](mailto:Rebecca.Noblett@nwlmcs.org) to confirm your place.

---

## **National Insurance Contributions**

At the recent England national conference of LMCs, the BMA debated the impact that the increase in employer National Insurance (NI) contributions have on GP practices and passed a motion demanding that the Health Secretary rectify the issue with funding to the core GP Contract.

The BMA continues to [put pressure on the Government](#) regarding concerns and the Chair of GPC England, Dr Katie Bramall-Stainer, [referenced the response from the Secretary of State](#) for Health in her speech to the Conference, where she said:

"Mr Streeting recognises that we as GPs are so clearly the beating heart of the NHS family. We now need him to follow through and treat us as such".

Please use the BMA [online calculator](#) to estimate the impact of the increases to employer National Insurance contributions and the national minimum/living wage on General Practice in England.

Data from the BMA online calculator submissions so far indicates that the average additional cost pressure runs to around £35,000 for each practice. This means practices are at risk of closure or, as a minimum, reducing staff and services as a result.

The recent announcement about the NI increase has hugely affected the morale of the profession. Listen to **Dr Adam Janjua** explain why it is necessary for General Practice to come together and take collective action as “enough is enough”. <https://www.youtube.com/watch?v=jBon3HpazRI>

---

### [‘Protect your Patients and Protect your Practice’ Campaign](#)

The [BMA’s ‘Protect your Patients and Protect your Practice’ campaign web page](#) has information about all of the actions. Please also refer to other useful links such as:

- [Safe Working Guidance Handbook](#)
- [Guidance for GP collective action](#) for sessional GPs and GP registrars
- [Background to the 2024/25 contract changes](#)
- [Patient materials](#) (waiting room/website videos and [infographics](#))

The BMA want GPs to feel safe and empowered to take action to protect their patients and their practices.

---

### **Data (Use and Access) Bill**

Changes to UK data protection law have been proposed in the government’s new Data (Use and Access) Bill which had its second reading in the House of Lords in November. The BMA [briefing](#) highlighted concerns about the potential impact on health data should there be a departure from existing high standards of data protection. The BMA is particularly concerned about the erosion of transparency standards when data is processed for research purposes and the threat to the regulatory independence of the Information Commissioner’s Office.

The bill also addresses the technical deficit in the NHS that limits data sharing and sets out measures to address this. IT system suppliers will be forced to develop software for sale in the NHS in line with technical standards – which the BMA have long called for.

---

### **Government Review of Physician Associates**

The Government has launched an [independent review of physician associates \(PAs\) and anaesthesia associates \(AAs\)](#). In response to this, the BMA Chair of Council, Dr Phil Banfield, welcomed that the Government has acknowledged the concerns of doctors and accepted there is a safety issue with the employment of physician associates. He said:

*“So we need to know what immediate safety measures NHSE will put in place, how quickly they will pause their PA expansion plans, and in the meantime if they will adopt the BMA’s own guidelines to start protecting patients now.”*

Read the full statement [here](#).

Read the BMA guidance: [PAs in general practice: making it safe for patients and GPs](#)

---

### **Public Sector Self-Compassion at Work Programme - Lancashire and South Cumbria only**

As previously mentioned the LMC have commissioned Amanda Super Consulting to deliver a number of programmes across the Lancashire and South Cumbria ICB area focusing on Compassion.

The Programme provides a full grounding in the theory and practice of the approach. It takes place over four modules, can be fitted around your busy working life and is aimed at anyone within General Practice including receptionists, medical secretaries, admin support etc.

If you would like to take part in the Programme please contact

[Rebecca.Noblett@nwlmcs.org](mailto:Rebecca.Noblett@nwlmcs.org)

---

### **Flu Vaccination Survey**

The [NHS England vaccination strategy](#), launched in December 2023, contained a proposal for NHSE to explore the impact of a move to the centralised provision of flu vaccines. As part of that exercise, NHSE has launched a survey of General Practice and pharmacy providers to gather their views on both the current model of procurement, and the potential benefits and challenges of a centralised procurement model. Any such change will not be implemented for the 2025/26 season flu programme.

The outcome of the survey will inform any future discussion on potential changes of the procurement model that NHSE will have with GPC England.

Take the survey [here](#)

---

### **LMC Training Events**

Please see a list of upcoming training events being hosted by the LMC:

- [Sickness Management](#)
- [Change Management](#)

To book your place or find out more information, please contact

[Rebecca.Noblett@nwlmc.org](mailto:Rebecca.Noblett@nwlmc.org)

---

## LMC Vacancies

2 out of our 5 Committees have seats available for GP representation:

- North Cumbria - 2 seats available
- Central Lancashire - 3 seats available

We are keen to hear from GPs, including GP Registrars/ Trainees, who may wish to get involved to represent your constituents. [Please let us know](#) if you are interested in being a LMC member or would like to find out more.

---

## Help Us Grow Our Audience

We understand that you are busy and are likely to receive many emails on a daily basis. However it is important for you to receive communications from us because **we can help and support you.**

We know there are many colleagues who do not receive our brieflet, so please help us by sharing this with your team and letting us know to add them to our distribution lists.

Contact Us







